

**F** **FUDES**

DESIGN &  
CONSTRUCTION



# ➤ CONTENT

- 5 WELCOME TO FUDES
- 6 ABOUT FUDES
- 7 OUR SERVICES
- 8 LICENCES
- 9 COMPLETED PROJECTS / ONGOING PROJECTS

## COMPLETED PROJECTS

- 10 1 NEVSKAYA RATUSHA
- 16 2 FEDERATION TOWER -1 & +1 FLOORS
- 22 3 REGIONS GROUP HEADQUARTERS
- 28 4 ISR HOLDING HEADQUARTERS
- 34 5 POLYANKA 44 PSN SALES OFFICE
- 40 6 GOOGLE MOSCOW HEADQUARTERS
- 44 7 JONES LANG LASALLE MOSCOW HEADQUARTERS
- 50 8 NOKIA MOSCOW HEADQUARTERS
- 54 9 OLYMPIC VILLAGE NOVOGORSK RESORT
- 58 10 CRATE & BARREL AFIMALL
- 62 11 CRATE & BARREL METROPOLIS
- 66 12 MERCEDES-BENZ SERVICE STATION
- 70 13 OLYMP RESTAURANT
- 76 14 TRADE COMPANY BEZANT HEADQUARTERS
- 82 15 LIGHTING TECHNOLOGIES SHOWROOM
- 86 16 PRIVATE APARTMENT MOSFILMOVSKAYA
- 90 17 DELANO MOSCOW MOCK-UP ROOMS

## ONGOING PROJECTS

- 94 18 ONLY RESIDENTIAL COMPLEX
  - 98 19 FEDERATION TOWER -2 /-3 /-4 FLOORS
- 
- 104 RECOMMENDATIONS
  - 106 HEALTH AND SAFETY
  - 107 ENVIRONMENTAL POLICY

# WELCOME TO FUDES



For over 20 years our company has been working with great success in the construction industry in Russia. We have completed over 200 unique, high quality and prestigious projects for many well-known Russian and international companies and private clients.

We have a proven track record of delivering demanding projects on time and on budget because of our extensive experience, highly qualified team of engineers, architects and designers, modern equipment, and an international network of logistics offices in Paris and Istanbul.

The cornerstone of our approach to business is an individual approach to our clients' needs, to the solutions required to complete each project and an open, straightforward and collaborative relationship with our clients.

We will be very happy to be part of your team and help you to realize your goals!

**FUDES** DESIGN & CONSTRUCTION

## ABOUT FUDES

FUDES is a full service construction and fit-out company providing turnkey services for commercial and residential construction and interior fit-out projects. With our team of professionals, we deliver projects on time, on budget and with an exceptional level of quality.

We have strong working relationships with most of the major real estate, architectural and project management companies

Our engagement is not only to keep up our track record of absolute delivery, but also to ensure a smooth handing over to our Clients by remaining involved in the project after its handover.

We believe in transparency, we act as a competent contractor at all times, keeping our Clients and their representatives fully informed at all stages of the project.

We care about our people, we are committed to provide working conditions that are the safest and the healthiest possible in all circumstances.

We care about our planet and our communities, their protection is our priority in every step we take.

## OUR SERVICES

### **1. Complete turn-key design services**

- Conceptual Design
- Architectural Design and space planning
- Engineering systems design
- Working / Construction Drawings and Documentation
- As-built Drawings, testing and certification

### **2. Complete turn-key construction services / General Contracting**

- Building construction and reconstruction
- Construction Management
- Fit-Out works including engineering systems
- Local and international procurement with a logistic network in Paris and Istanbul.
- Commissioning
- Permits and approvals

### **3. Commercial and Real Estate Development Projects**

- In house Commercial and Real Estate Development Department
- Partnership in development projects





## 1

### NEVSKAYA RATUSHA ADMINISTRATIVE BUILDING

**Location:** 22 Degtyarny lane, Saint-Petersburg

**Size:** 20000 sq.m.

**Client:** NRK LLC (VTB Group)

**Concept Designs:** SPEECH

**Working Drawings:** FUDES / AECOM / EVGENY GERASIMOV AND PARTNERS

**Project Management:** AECOM

**Scope of work:** Finishing works for administrative building «Nevskaya Ratusha» including central atrium, reception areas, information zones, lobbies, 3 conference rooms, cafeterias, meeting rooms and offices, bookstore, laboratories, medical and fire points, balconies on the 3<sup>rd</sup> floor; press center on the 4<sup>th</sup> floor and observation site on the 11<sup>th</sup> and 12<sup>th</sup> floors.

design	design project
	<b>working drawings</b>
	permit documents
architectural works	<b>construction works</b>
	<b>finishing works</b>
	engineering system
mep	<b>materials &amp; equipment procurement</b>
	<b>custom productions</b>









COMPLETED PROJECT  
NEVSKAYA RATUSHA ADMINISTRATIVE BUILDING





## 2

### FEDERATION TOWER -1 & +1 FLOORS

**Location:** Moscow City

**Size:** 7500 sq.m.

**Client:** Federation Tower

**Concept Design:** SPEECH

**Working Design:** FUDES

**Project Manager:** SD Development

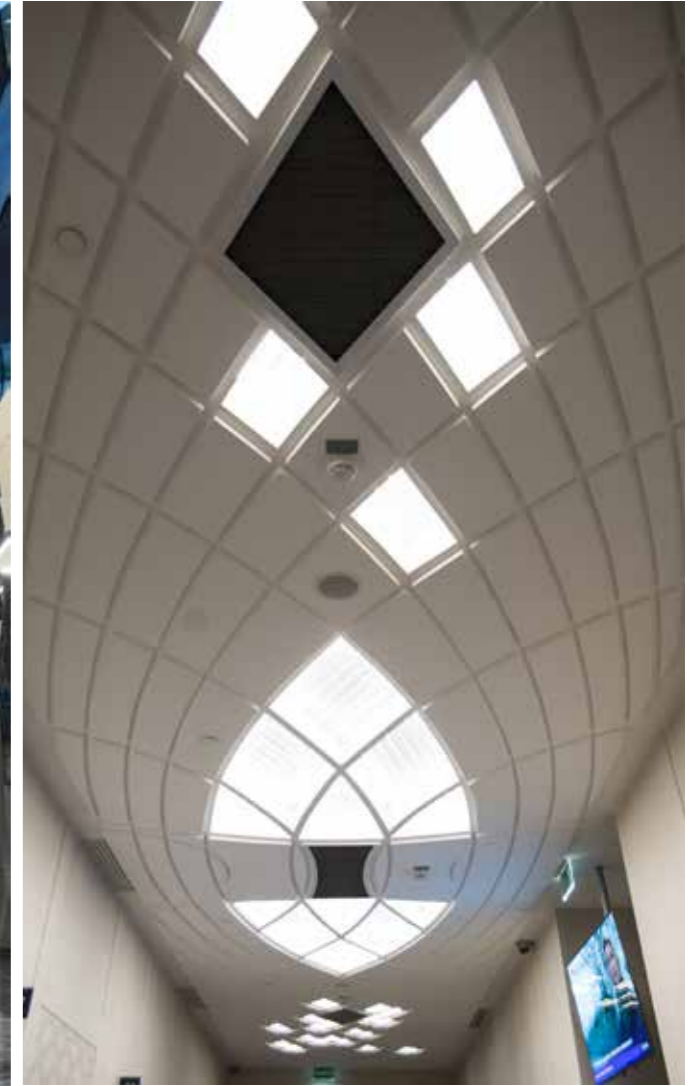
**Scope of work:** Working drawings, finishing works and commissioning of main entrances, reception zones, central atriums, residential zone entrances and retail zones

design	design project
	<b>working drawings</b>
	permit documents
architectural works	construction works
	finishing works
	custom productions
mep	materials & equipment procurement
	engineering system





COMPLETED PROJECT  
FEDERATION TOWER -1 & +1 FLOORS





COMPLETED PROJECT  
FEDERATION TOWER -1 & +1 FLOORS





**3**  
**REGIONS GROUP HEADQUARTERS**

**Location:** 14 Milyutinsky lane, Moscow

**Size:** 9700 sq.m.

**Client:** REGIONS GROUP

**Concept Design:** ARCH 3 / Wychwood Design

**Working Drawings:** FUDES

**Project Manager:** In House

**Scope of work:** Demolishment works, engineering and architectural working design, fit out and construction works.

design	design project
	<b>working drawings</b>
	permit documents
architectural works	<b>construction works</b>
	<b>finishing works</b>
	<b>custom productions</b>
mep	<b>materials &amp; equipment procurement</b>
	<b>engineering system</b>













## 4

### ISR HOLDING HEADQUARTERS

**Location:** Luzhniki Street bld. 24/19, Moscow

**Size:** 3000 sq.m.

**Client:** ISR Holding

**Concept Design:** UNK Project/FUDES

**Working Drawings:** FUDES

**Project Manager:** In House

**Scope of work:** Design & Build project for ISR Holding new office in Moscow, including offices, VIP zones and cafeterias.

design	design project
	working drawings
	permit documents
architectural works	construction works
	finishing works
	custom productions
mep	materials & equipment procurement
	engineering system













## 5

### POLYANKA 44 PSN SALES OFFICE

**Location:** 1st Spasonalivkovskiy lane, 9/2, Moscow

**Size:** 1000 sq.m.

**Client:** PSN Group

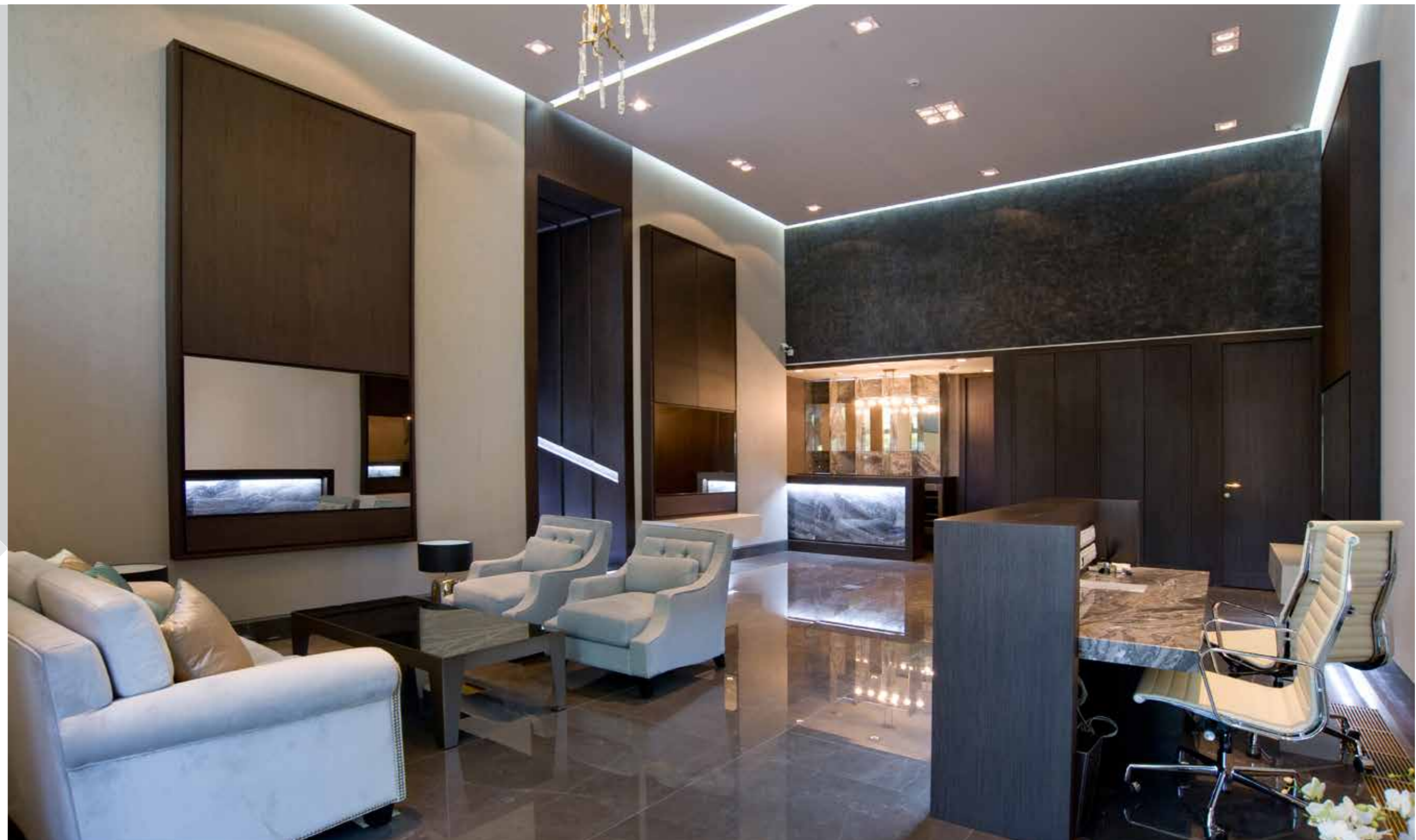
**Concept Design:** John McAslan + Partners

**Working Drawings:** FUDES

**Project Management:** In House

**Scope of work:** Demolition and fit out works for Sales Office of PSN Group, located in the Center of Moscow.

design	design project
	<b>working drawings</b>
	permit documents
architectural works	construction works
	finishing works
	custom productions
mep	materials & equipment procurement
	engineering system













**6**  
 GOOGLE MOSCOW HEADQUARTERS

**Location:** Balchug Plaza, Moscow

**Size:** 2500 sq.m.

**Client:** Google

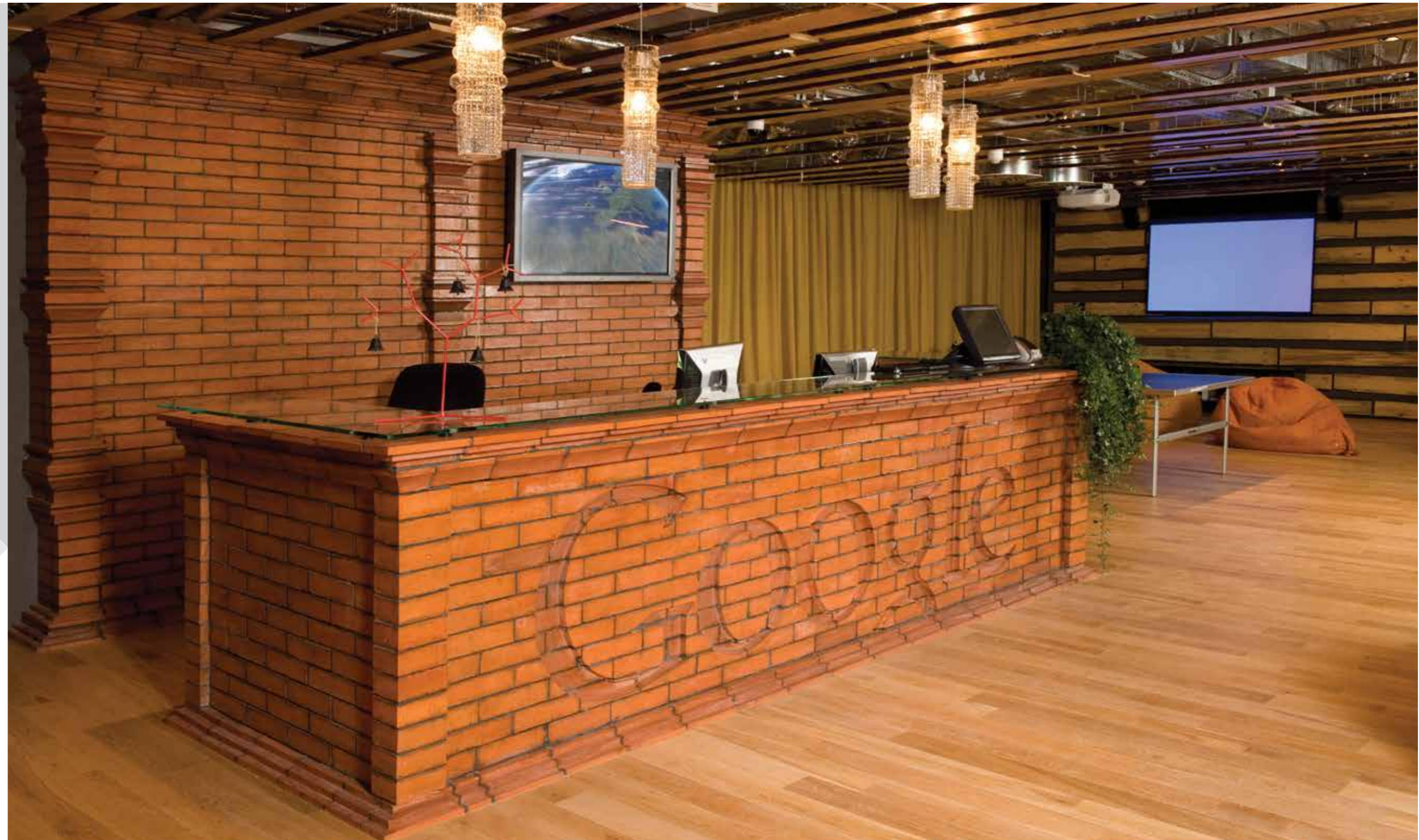
**Concept Design:** Camenzind Evolution

**Working Drawings:** FUDES

**Project Manager:** Mott MacDonald R

**Scope of Work:** Full scope fit-out works of exceptional Google Moscow Headquarters

design	design project
	<b>working drawings</b>
	permit documents
architectural works	construction works
	finishing works
	custom productions
mep	materials & equipment procurement
	engineering system









## 7

### JONES LANG LASALLE MOSCOW HEADQUARTERS

**Location:** Vivaldi Plaza, Moscow

**Size:** 2500 sq.m.

**Client:** Jones Lang LaSalle

**Concept Design:** AEDAS

**Working Drawings:** FUDES

**Project Manager:** Tetris Solutions

**Scope of work:** Full scope fit-out works of the JLL headquarters in Moscow. In this unique project, FUDES assisted the client for BREEAM and Gold LEED certifications.

design	design project
	<b>working drawings</b>
	permit documents
architectural works	<b>construction works</b>
	<b>finishing works</b>
	<b>custom productions</b>
mep	<b>materials &amp; equipment procurement</b>
	<b>engineering system</b>





COMPLETED PROJECT  
JONES LANG LASALLE MOSCOW HEADQUARTERS









## 8

### NOKIA MOSCOW HEADQUARTERS

**Location:** Voentorg Business Center, Moscow

**Size:** 3000 sq.m.

**Client:** NOKIA

**Concept Design:** Gullsten-Inkinen Design & Architecture

**Working Drawings:** FUDES

**Project Manager:** EC Harris

**Scope of work:** Full scope fit-out works of NOKIA headquarters in Moscow.

design	design project
	<b>working drawings</b>
	permit documents
architectural works	construction works
	finishing works
	custom productions
mep	materials & equipment procurement
	engineering system









## 9

### OLYMPIC VILLAGE NOVOGORSK RESORT

**Location:** Moscow Region, Novogorsk

**Size:** 7000 sq.m.

**Client:** Himki Group

**Concept Design:** DBA-Group

**Working Drawings:** FUDES

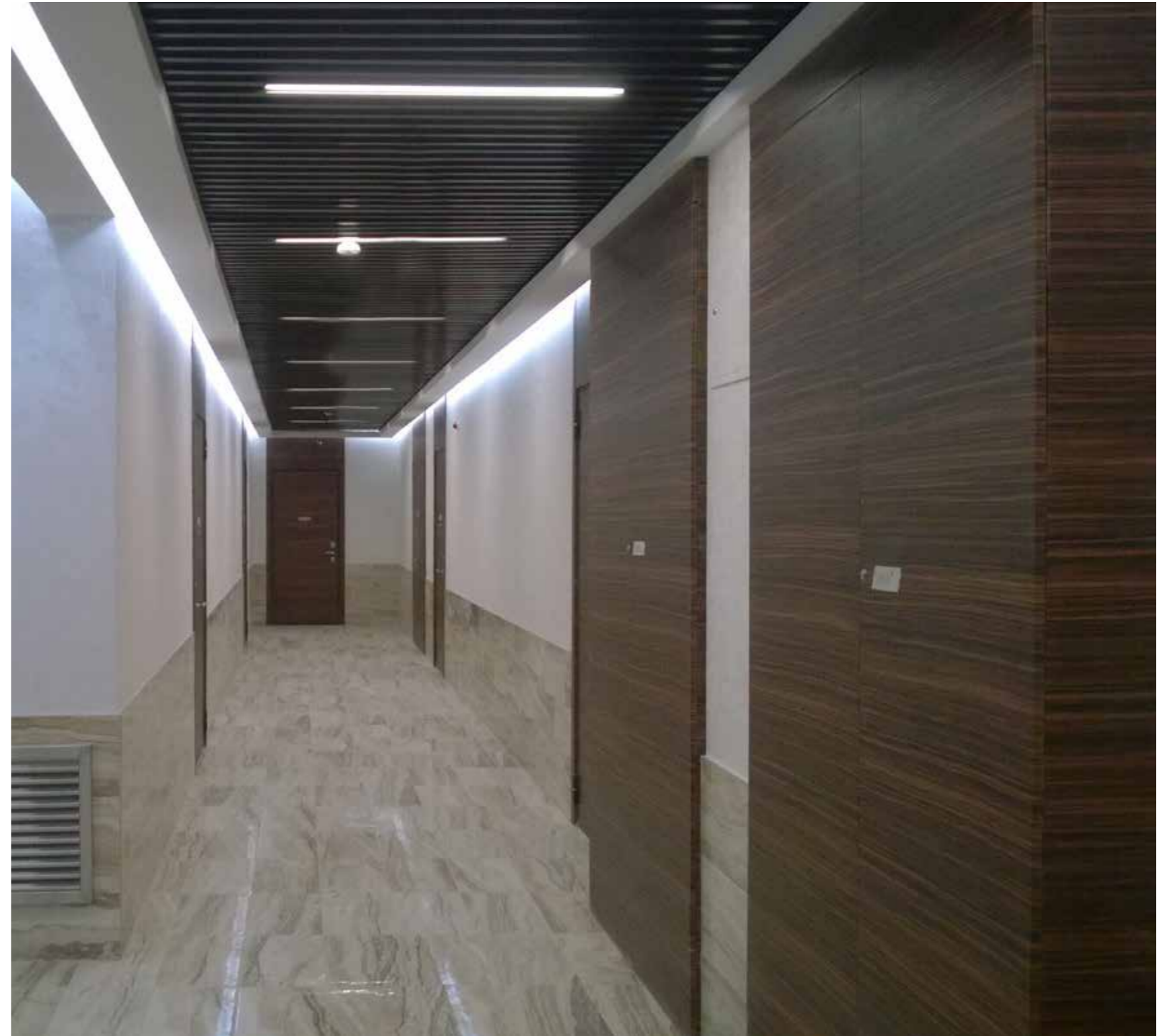
**Project Management:** In House

**Scope of work:** Fit-out works for the common areas of Olympic Village Residential Complex

design	design project
	<b>working drawings</b>
	permit documents
architectural works	construction works
	finishing works
	custom productions
mep	materials & equipment procurement
	engineering system









## 10

### CRATE & BARREL AFIMALL

**Location:** AfiMall Shopping Center, Moscow

**Size:** 3000 sq.m.

**Client:** Crate & Barrel (Dogus Avenue)

**Concept Design:** UNK Project

**Working Drawings:** UNK Project

**Project Management:** Cushman & Wakefield

**Scope of works:** Full Scope Fit-out and construction works of the 1<sup>st</sup> Crate&Barrel shop in Moscow.

design	design project
	working drawings
	permit documents
architectural works	construction works
	finishing works
	custom productions
mep	materials & equipment procurement
	engineering system









## 11

### CRATE & BARREL METROPOLIS

**Location:** Shopping center Metropolis, 16A / 4 Leningradsky highway, Moscow

**Size:** 2000 sq.m.

**Client:** Crate & Barrel (Dogus Avenue)

**Concept Design:** UNK Project

**Working Drawings:** UNK Project

**Project Management:** Cushman & Wakefield

**Scope of works:** Full Scope Fit-out and construction works of the 2<sup>nd</sup> Crate&Barrel shop in Moscow.

design	design project
	working drawings
	permit documents
architectural works	construction works
	finishing works
	custom productions
mep	materials & equipment procurement
	engineering system









# MERCEDES-BENZ SERVICE STATION

12

MERCEDES-BENZ SERVICE STATION

**Location:** 39A Leningradsky prospect, Moscow

**Size:** 650 sq.m.

**Client:** Mercedes-Benz RUS

**Concept Design:** Kamosline

**Working Drawings:** FUDES

**Project management:** In House

**Scope of work:** Demolishment, reconstruction and fit-out works, including facility offices

design	design project
	working drawings
architectural works	permit documents
	construction works
	finishing works
mep	custom productions
	materials & equipment procurement
	engineering system





COMPLETED PROJECT  
MERCEDES-BENZ SERVICE STATION





COMPLETED PROJECT  
**OLYMP RESTAURANT**

**13**  
 OLYMP RESTAURANT

**Location:** Luzhnetskaya naberezhnaya 24/19, Moscow

**Size:** 650 sq.m.

**Client:** OLYMP JUNIOR

**Concept Design:** K&T projects

**Working Drawings:** FUDES

**Project Management:** In House

**Scope of work:** Full scope fit-out works of the Olymp Restaurant at Lujniki

design	design project
	<b>working drawings</b>
architectural works	permit documents
	<b>construction works</b>
	<b>finishing works</b>
mep	<b>custom productions</b>
	<b>materials &amp; equipment procurement</b>
	<b>engineering system</b>













## 14

### TRADE COMPANY BEZANT HEADQUARTERS

**Location:** B. Serpukhovskaya str., 230/1, Moscow area, Podolsk

**Size:** 3800 sq.m.

**Client:** Trade Company BEZANT

**Concept Design:** UNK Project

**Working Drawings:** FUDES

**Project Management:** In House

**Scope of work:** Full scope fit-out works including office area, showroom, gym and cafeteria for employees.

design	design project
	<b>working drawings</b>
	permit documents
architectural works	<b>construction works</b>
	<b>finishing works</b>
	<b>custom productions</b>
mep	<b>materials &amp; equipment procurement</b>
	<b>engineering system</b>





COMPLETED PROJECT  
TRADE COMPANY BEZANT HEADQUARTERS









COMPLETED PROJECT  
**LIGHTING TECHNOLOGIES SHOWROOM**

**15**  
 LIGHTING TECHNOLOGIES SHOWROOM

**Location:** ARTPLAY, Moscow

**Size:** 1100 sq.m.

**Client:** Lighting Technologies

**Concept Design:** lo-consultants

**Working Drawings:** MK Proekt/FUDES

**Project Management:** In House

**Scope of work:** Demolishment and structural strengthening works, construction of new mezzanine floor, full scope fit-out works.

design	design project
	<b>working drawings</b>
	permit documents
architectural works	<b>construction works</b>
	<b>finishing works</b>
	<b>custom productions</b>
mep	<b>materials &amp; equipment procurement</b>
	<b>engineering system</b>









## 16

### PRIVATE APARTMENT MOSFILMOVSKAYA

**Location:** Mosfilmovskaya st., Moscow

**Size:** 400 sq.m.

**Client:** Private

**Concept Design:** DeLuxe Group

**Working Drawings:** FUDES

**Project Manager:** In House

**Scope of work:** Demolishment works, fit-out and installation of engineering systems.

design	design project
	<b>working drawings</b>
	permit documents
architectural works	<b>construction works</b>
	<b>finishing works</b>
	<b>custom productions</b>
mep	<b>materials &amp; equipment procurement</b>
	<b>engineering system</b>









## 17

### DELANO MOSCOW MOCK-UP ROOMS

**Location:** OKO Apartments, Moscow City

**Size:** 200 sq.m.

**Client:** Capital Group

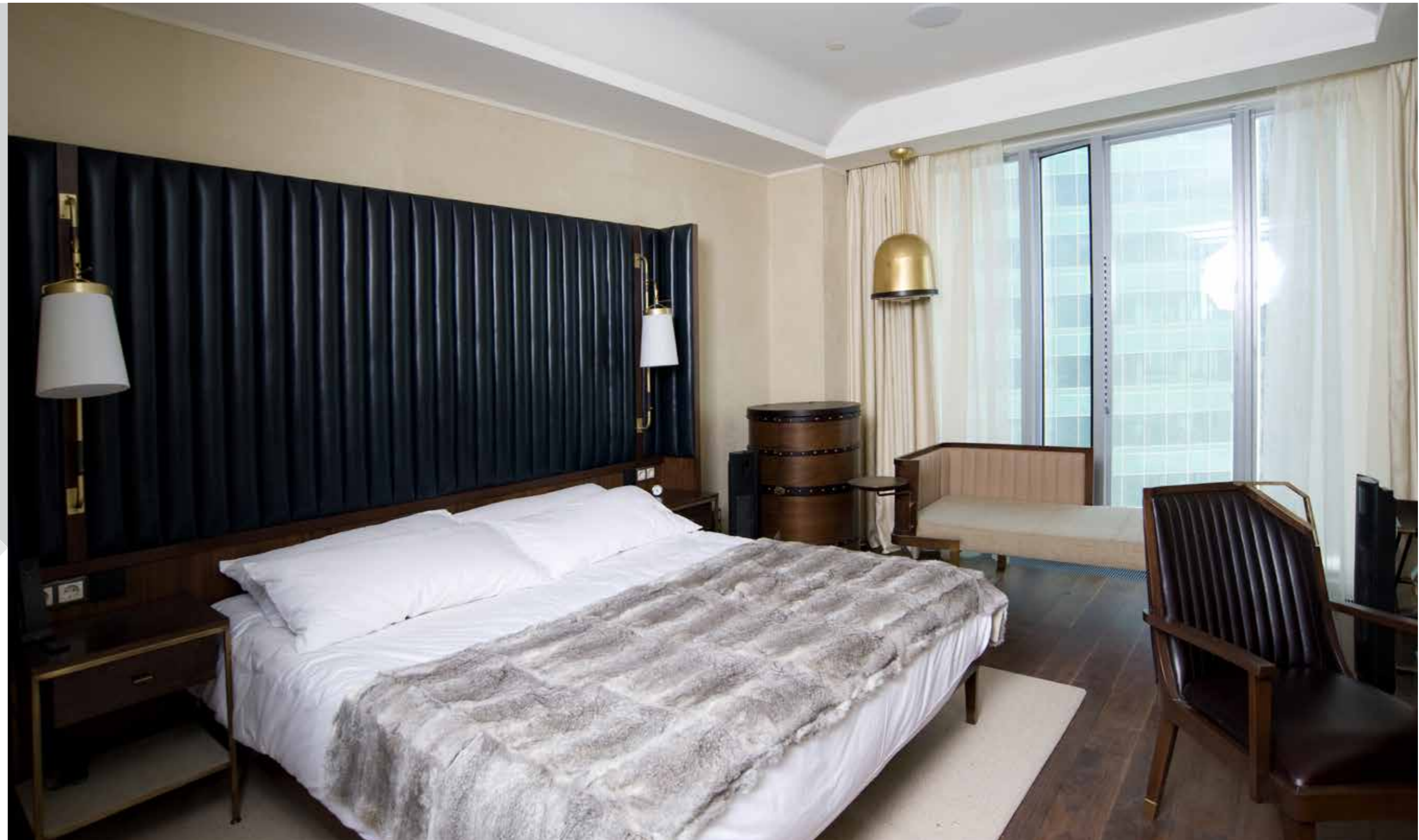
**Concept Design:** Avroko

**Working Drawings:** FUDES

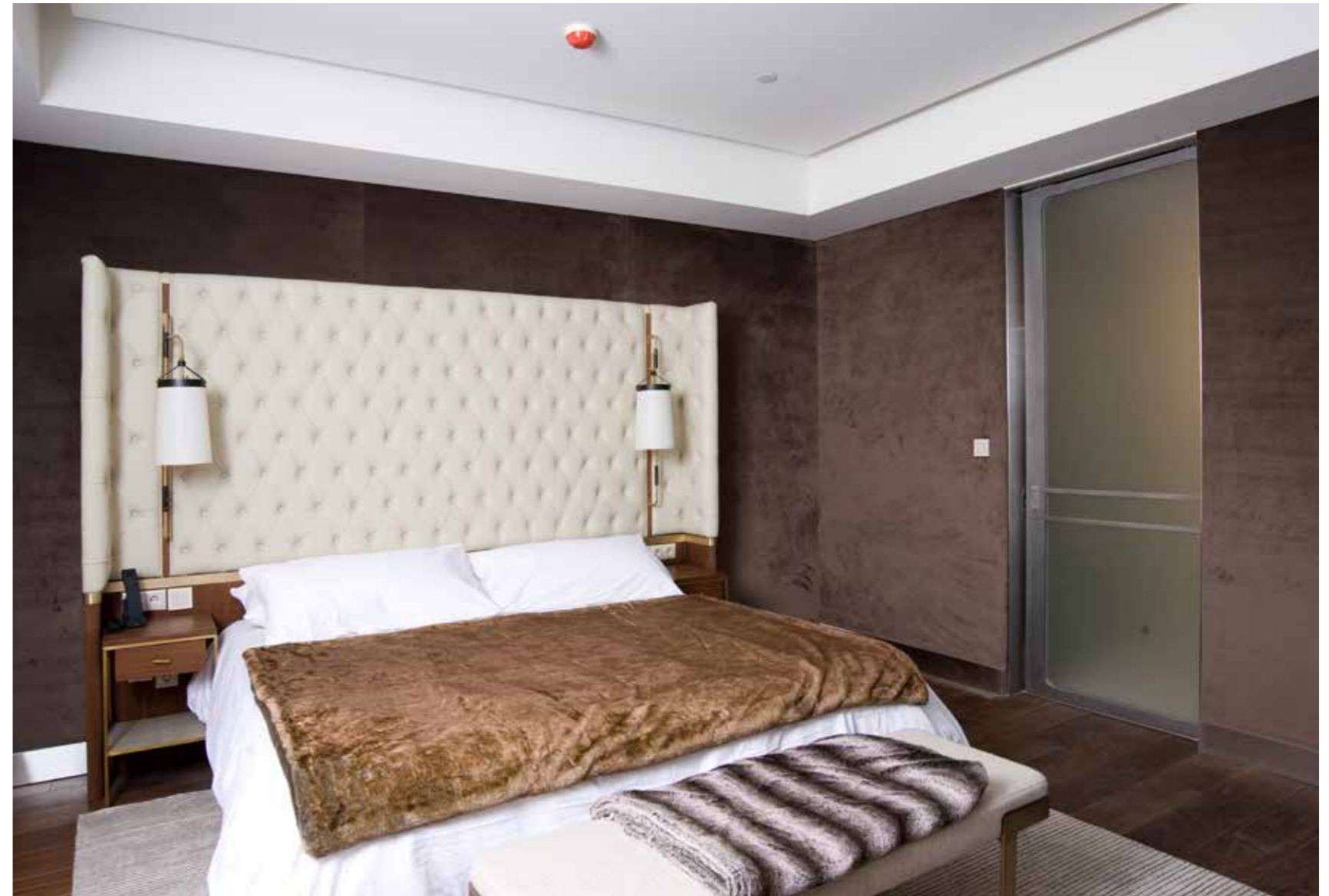
**Project Management:** In House

**Scope of work:** Full scope Fit-Out works for Delano Hotel project, mock-up rooms, including all FF&E procurement from Vietnam, USA, Italy, Turkey, China and built-in furniture.

design	design project
	<b>working drawings</b>
	permit documents
architectural works	construction works
	finishing works
	custom productions
mep	materials & equipment procurement
	engineering system









## 18

### ONLY RESIDENTIAL COMPLEX

**Location:** Zarechnaya str, Moscow

**Size:** 10500 sq.m.

**Client:** Alto Assets

**Concept Designs:** Alto Assets

**Working Drawings:** FUDES

**Project Management:** Central Properties

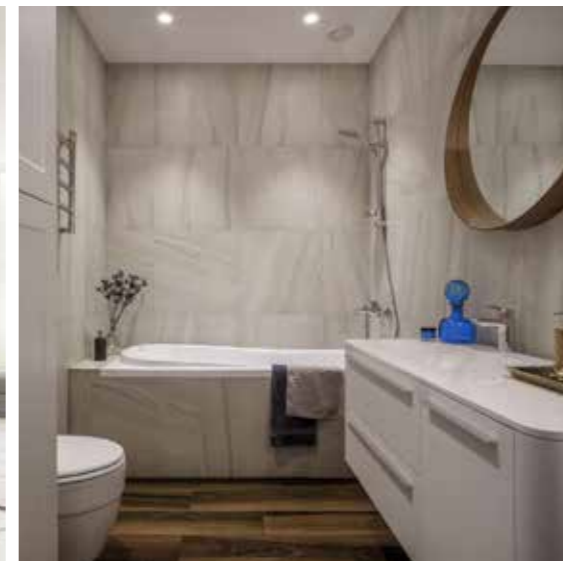
**Scope of work:** Full Scope fit-out works for 105 apartments and common areas of Business Class sixteen floors building.

design	design project
	<b>working drawings</b>
	permit documents
architectural works	<b>construction works</b>
	<b>finishing works</b>
	custom productions
mep	<b>materials &amp; equipment procurement</b>
	engineering system





ONGOING PROJECT  
ONLY RESIDENTIAL COMPLEX





ONGOING PROJECT  
**FEDERATION TOWER** -2 /-3 /-4 FLOORS

**19**  
 FEDERATION TOWER -2 /-3 /-4 FLOORS

**Location:** Moscow City

**Size:** 6000 sq.m.

**Client:** Federation Tower

**Concept Design:** SPEECH

**Working Design:** FUDES

**Project Management:** SD Development

**Scope of work:** Working drawings, finishing works and commissioning of central atriums and retail zones.

design	design project
	<b>working drawings</b>
	permit documents
architectural works	construction works
	finishing works
	custom productions
mep	materials & equipment procurement
	engineering system





ONGOING PROJECT  
FEDERATION TOWER -2 /-3 /-4 FLOORS





ONGOING PROJECT  
FEDERATION TOWER -2 /-3 /-4 FLOORS





# RECOMMENDATIONS

The image displays a collection of 20 recommendation letters from various clients and partners. The letters are arranged in two rows of ten. Each letter is a scanned document, typically on white paper, with the company's logo at the top. The text is in Russian and provides positive feedback on the services provided by FUDES. Each letter includes a signature and an official stamp or seal. The companies mentioned include PBK, Google, GarantBank, Samsung, W, RCI Banque, Crate&Barrel, and others. The letters are dated between 2014 and 2015.



# ➤ HEALTH AND SAFETY

- **It is the policy of FUDES, to comply or to exceed all that is required under the Russian Federation rules and regulations regarding health and safety in the workplace**
- **It is our commitment to provide working conditions that are the safest and the healthiest possible in all circumstances**
- **Our company policy is summarized below**
  - To provide and maintain a working environment which, where possible, is safe without risk to health and adequate as regards to welfare facilities and arrangements
  - To provide such information, instruction, safety plans, risk assessment and associated methods of control, training and supervision as is necessary for the implementation of company policy so as to ensure the health and safety of our employees whilst at work
  - To conduct the affairs of the company in such a manner as to ensure, that third parties are not exposed to health and safety risks arising from our employees working practices
  - To provide and maintain in good condition, such plant, tools and equipment which are necessary for the safe completion of the project
  - To maintain a procedure for monitoring and reporting accidents and hazardous or dangerous occurrences, in particular those involving personal injury, with the aim of safeguarding against a reoccurrence of the cause of the incident
  - To issue all our site staff with the necessary safety equipment, including but not limited to, hard hats, working boots, eye protection, ear protection and working overalls
- **FUDES is putting safety 1<sup>st</sup>**

# ➤ ENVIRONMENTAL POLICY

FUDES is aware of both current legislation and public awareness as regards environmental issues.

Our main priority is to minimize environmental effects in all their forms at the project site and its surrounding area.

This includes not only such effects as air omissions, water discharges, pollution, waste, energy consumption, recycling etc., but also in the protection of employees and the public in the use of resources and in the minimization of other disturbances to the area surrounding the project.

- In summary it is the policy of FUDES to:
- Maintain a positive and responsible approach to managing the environment.
- Always act in accordance with good practice, both during design and construction, preserving and where possible enhancing the quality of the environment.
- Establish monitoring, reporting and reviewing systems to ensure compliance with the Environmental Policy.
- Liaise and co-operate with appropriate enforcement authorities on matters affecting the environment.
- Comply with relevant legislation.
- When requested as part of a project, FUDES will assist our Clients achieve the standards required to achieve Leed, Breeam and other international certification.
- It is our policy to promote the standards of the Russian Green Building council to all our clients.











**F** **FUDES** DESIGN &  
CONSTRUCTION

**FUDES LLC MOSCOW**

Bolshoy Karetniy per., B.20/3,  
Moscow, Russia, 127051  
Phone: +7 495 989 63 29  
Fax: +7 495 699 27 49  
E-Mail: info@fudes.ru

**FUDES LLC PARIS**

5, Boulevard Poissonnière,  
75002 Paris France  
Phone: +33 6 67 42 25 12

[www.fudes.ru](http://www.fudes.ru)